

The Oklahoma WinCharger

May/June 2006 (A Newsletter for Oklahoma Wind Stakeholders) Vol. 6, #3



Oklahoma Wind Power Initiative

A Collaborative Project by the
University of Oklahoma and Oklahoma State
University
based at the

Environmental Verification and Analysis Center
3200 Marshall Ave., Suite 150
Norman, OK 73072-8032
Tel: (405) 447-8412
www.ocgi.okstate.edu/owpi/

Staff

Editors and contributors: Stephanie Buway, OWPI - OU

Copy Editor: Mike Klatt, EVAC - OU

Contributors:

Steve Stadler, Geography Department, OWPI - OSU
Mark Meo, Science and Public Policy Program, OWPI - OU

Oklahoma Renewable Energy Legislation 2006 Update

HB 2512, which calls for a state tax credit for the purchase of small wind, geothermal, and hydroelectric systems, has been passed through both the House and Senate. Senate amendments to the bill were rejected by the House, therefore a subcommittee must now convene to discuss the details and work out items that both House and Senate members agree on. Once the subcommittees have discussed the bill, it will travel back into the House and Senate for another vote.

HB 2469, which calls for an amendment to the state Production Tax Credit (PTC) modifying the tax credit to be paid over ten years as well as reducing the size of projects eligible for the PTC from 50 MW to 1 MW, has also passed through the Senate as well as the House. Senate amendments for this bill were also rejected in the House which will again lead to a new conference bill and another vote.

Governor's Conference on Agriculture & Economic Growth

The Governor's Conference, hosted by the Oklahoma Department of Agriculture, was a successful event. It was held April 25-26, 2006 at the Oklahoma City Marriott. An energetic crowd listened to various issues concerning Oklahoma's agriculture industry. Presenters for the conference spoke on topics such as:

- Biofuels in Oklahoma
- Agritourism in Action
- 2007 Farm Bill – What does it mean for the Producer?
- Oklahoma's Equine Industry
- Adding Value to Oklahoma Agriculture

Governor Brad Henry concluded the conference by presenting Mr. Murray Williams with the 2006 Oklahoma Agriculture Hall of Fame award for his dedication to the state, his community, and his cotton farming and livestock production.

Largest Offshore Wind Farm Possible in Texas

Off of the coast of Padre Island and south of Baffin Bay are 39,000 acres of submerged land that is being looked at for a potential offshore wind farm. Superior Renewable Energy (SRE) plans to build a 500 MW wind farm that would provide power for approximately 125,000 homes. When the project is completed, it will be the largest offshore wind farm in the United States, ahead of the 300 MW offshore Stateline Wind Project in Washington and Oregon. The Texas General Land Office has granted a multi-million lease agreement for the rights to the submerged land as well as a study period where SRE will conduct research and avian studies.

Editor's Note: The above is a summary from AWEA's Wind Energy Weekly #1191.

Another Record Year for Wind

After installing a record amount of wind power in 2005 – over 2,400 MW – the United States is set to install a record-breaking 3,000 MW by the end of 2006. This amount of energy is enough to power approximately 750,000 homes. To date this year, more than 400 MW of wind power have been installed in the U.S. This year alone, the wind industry plans to invest over \$4 billion in new energy capacity. Wind farms were the second largest source of electricity generating plants in 2005, following natural gas fired plants. According to Randall Swisher, AWEA executive director, “Wind power is a clean, safe, domestic source of renewable energy, and it helps protect consumers against rising fuel prices. The market is recognizing wind energy’s value.”

Editor’s Note: The above is a summary from AWEA’s Wind Energy Weekly #1190.

Centennial Wind Farm Owned & Operated by OG&E

The Oklahoma Corporation Commission has granted OG&E approval to own and operate their new 120 MW wind farm. Centennial Wind Farm will be located in Harper County where it will be built by Invenergy Wind. This is only one of a few utility-owned wind farms in the nation. Normally, utilities purchase the electricity from wind developers such as Florida Power & Light (FPL) or Horizon Wind Energy that own and operate the wind farm. Puget Sound Energy is another utility that owns and operates a wind facility. They own the 150 MW Hopkins Ridge Wind Project in Washington.

OG&E has had much success with their wind power program. Due to the popularity of wind power, the option for electricity from their first wind farm in Woodward was sold out. A waiting list was then created which has already reached max capacity. For those who wish to sign up for the wind power program, they will have to wait patiently until the option is available again.

Editor’s Note: The above is a summary from AWEA’s Wind Energy Weekly #1190.

Wind Power Impacts on Greater Prairie Chickens

A collaborative research project between wind developers, wildlife ecologists, federal and state agencies, and preservationists is underway called “Effects of Wind Power on the Demography and Population Genetics of the Greater Prairie-Chicken.” Oklahoma, Kansas and other Great Plains states share the habitat for this species. The bird has a large home range and is a signal of the overall health of the grassland ecosystem. This study is critical to understand the impacts of wind development in the prairie chickens’ habitats. The results will be able to mitigate the impacts and help conserve their population. The study will take place in Kansas’s Flint Hills where wind projects have already been proposed, as well as areas that have not.

Contributors to the project include the following: U.S. Fish & Wildlife Service, Kansas Department of Wildlife & Parks, both the Kansas and Oklahoma branches of The Nature Conservancy, the U.S. Department of Energy’s National Renewable Energy Laboratory, Horizon Wind Energy, PPM Energy, and FPL Energy.

Editor’s Note: The above is a summary from AWEA’s Wind Energy Weekly #1191.

National Renewable Portfolio Standard (RPS) Proposed

Senators from New Mexico, Indiana, Minnesota, Connecticut, Washington, and Rhode Island have come together to compose the “Enhanced Energy Security Act of 2006.” The proposed legislation would create a federal RPS of 10% by 2020 and a renewable energy certificate trading program. It would also provide incentives for the development of new vehicle technologies. Alternative fuels and an increase in the production of ethanol are also issues that are wrote into the legislation. Currently, twenty one states and the District of Columbia have implemented a RPS with many of them being successful.

Editor’s Note: The above is a summary from AWEA’s Wind Energy Weekly #1190.

Wind Turbine Interference with Military Radar

It has been discovered that at some sites, wind turbines can affect civilian and/or military radar by creating “holes” in the radar return. Though there are solutions, there are wind projects that have been halted due to this apparent problem. Signed into law in January of this year, the Department of Defense is required to study and report the effects of wind projects on military operations through the National Defense Authorization Act. The U.S. Air Force is the largest purchaser of wind energy and has turbines on or near some of their bases. Using those bases as an example, possible solutions are available.

Editor's Note: The above is a summary from AWEA's "Wind Turbines & Radar: An Information Resource."

Transition Needed From Fossil Fuels to Renewables

At a recent conference in Washington D.C., “Peak Oil and the Environment,” AWEA Board member David Blittersdorf stated that “energy supply is humanity’s biggest problem in the future as fossil fuel supplies decline.” The question was raised, “What do we do about it?” Through the use of renewable power, such as solar power, wind power, and geothermal power, we can reduce the amount of electricity used by three-quarters Blittersdorf said. The potential to use renewable power in the United States is great and needs to be released. Through conservation and energy efficiency, and the use of renewables, much can be achieved.

Editor's Note: The above is a summary from AWEA's Wind Energy Weekly #1191.

WINDPOWER 2006

The American Wind Energy Association (AWEA) will be hosting the WINDPOWER 2006 Annual Conference & Exhibition June 4-7, 2006 at the David L. Lawrence Convention Center in Pittsburgh, PA. Over 4,500 attendees and close to 300 exhibitors will infiltrate the city to learn about the latest technologies, sell the latest products, and share new and innovative

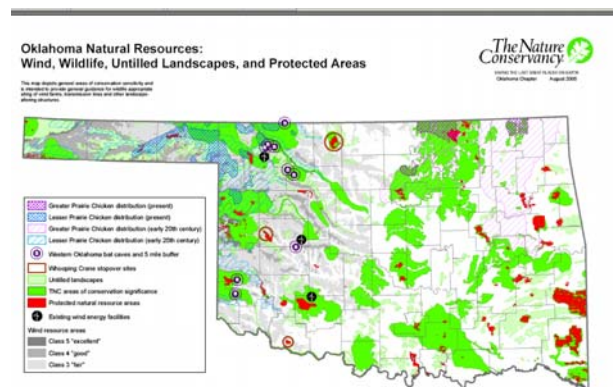
ideas. The following seven tracks give an insight to what issues will be discussed:

- Business Track
- Policy Track
- Technical Track
- Wind Potential Track
- Utility Track
- Policy/Technical Track
- Homes, Farms, and Community Wind Track

For general conference questions, contact Marissa Bundy at (202) 383-2512 or at mbundy@awea.org. Also, more information is available at www.awea.org/wp06.

Wind & Wildlife Interactive Map

Don't forget – the new interactive Wind and Wildlife Map is now available online!



Make sure to visit our website and view the new map at www.ocgi.okstate.edu/owpi.

Distribution of the WinCharger

Electronic distribution of The Oklahoma WinCharger is available. To sign up to receive your copy of the WinCharger by e-mail, go to the OWPI website at www.ocgi.okstate.edu/owpi, click on the link on the left side that says “Subscribe to the Oklahoma WinCharger,” and follow the instructions from there. Receiving your copy of the WinCharger by e-mail allows you to receive the newsletter faster and helps us keep our mailing costs down.

If you have recently moved or changed your e-mail address, please let us know. Address corrections or updates can be sent to Stephanie Buway at sbuway@gmail.com or by phone at 405-447-8412. Thank you.

Calendar of Coming Events

- Jun 4-7** **WINDPOWER 2006 Conference & Exhibition** hosted by AWEA. The David L. Lawrence Convention Center, Pittsburg, PA. For more information, call (202) 383-2512 or email mbundy@awea.org. Also see www.awea.org/wp06 for more information.
- Jun 6** **Small Wind Energy: State Stakeholders Meeting**, presented by the Interstate Renewable Energy Council and the National Renewable Energy Lab. Regional Enterprise Tower, 425 Sixth Avenue, Pittsburgh, PA. For more information, contact Larry Sherwood at LLSherwood@comcast.net.
- Jun 14** Meeting of the **Oklahoma Renewable Energy Council**, 10 am to noon, OK Department of Commerce, Gallery 1-2. See www.ocgi.okstate.edu/orec for more information.
- Jun 20-21** **11th Annual Inter-Tribal Environmental Council Conference** at the Sheraton Oklahoma City Hotel, Oklahoma City, OK. For more information contact Melinda Sims at msims@cherokee.org or see www.itecmembers.org.
- Jul 12** Meeting of the **Oklahoma Renewable Energy Council**, 10 am to noon, OK Department of Commerce, Gallery 1-2. See www.ocgi.okstate.edu/orec for more information.
- Aug 1-3** **CareerTech Summer Conference & Exposition**, hosted by the Oklahoma Department of Career & Technology Education. Tulsa Convention Center, Tulsa, OK. Contact Carol Dees at 405-525-8906 or email at cdees@okacte.org. See also www.okcareertech.org for more information.
- Aug 10-11** **Women in Agriculture and Small Business Conference** hosted by the Great Plains RC&D and the USDA Risk Management Agency. Clarion Convention Center, Oklahoma City, OK. See www.greatplainsrcd.org for more information.

125-548200

University of Oklahoma
EVAC - Environmental Verification and Analysis Center
3200 Marshall Ave., Suite 150
Norman, OK 73072-8032

Non-Profit Organization
U.S. Postage
PAID
University of Oklahoma

Return Service Requested



Oklahoma WinCharger
May/June 2006