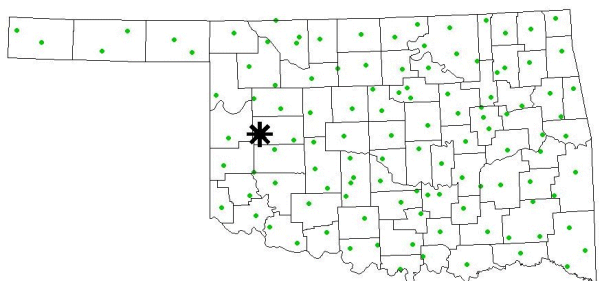


# Wind Climatology Butler Mesonet Site Station ID: BUTL



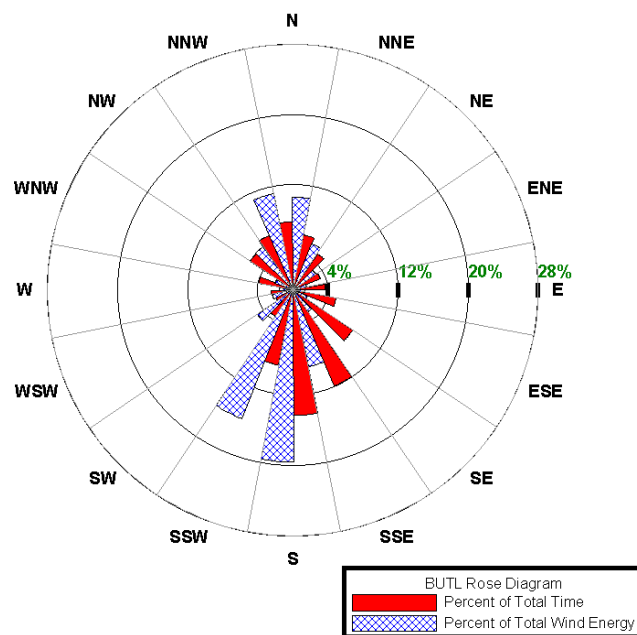
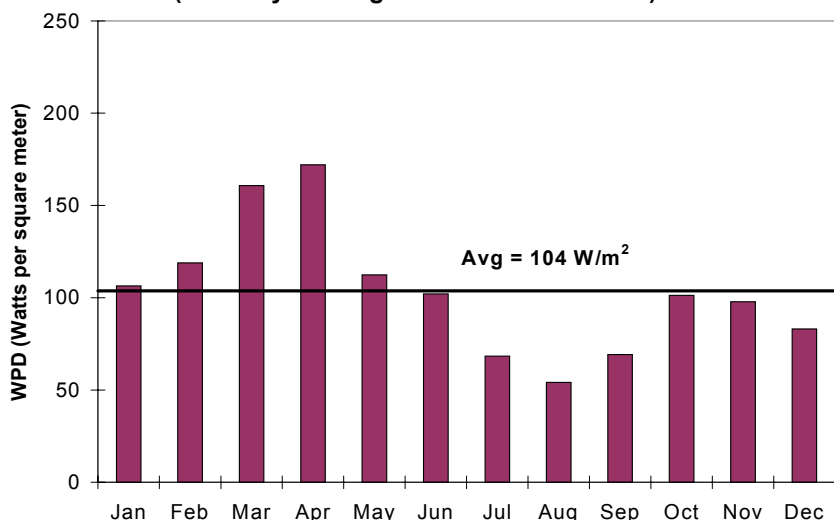
**Class 2 Site (January '94 – December '00)**  
**Average 10 m Wind Speed = 4.34 m/s (9.7 mph)**  
**Average 10 m Power Density = 104 W/m<sup>2</sup>**



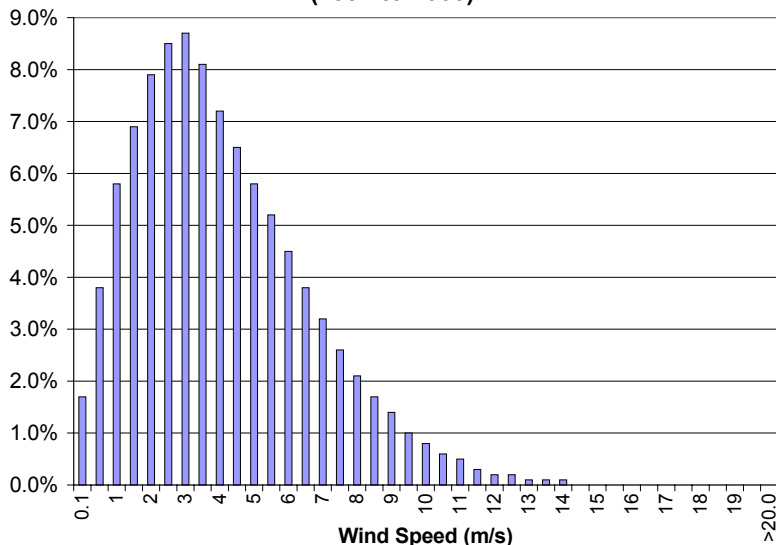
**Site Conditions:** The station's fetch conditions are rated "good". The terrain exposure at the site is -8 meters to the north and -18 meters to the south.

**Other Wind Statistics:** The five-minute averages for ten-meter wind speeds exceeded 9.0 m/s (20.1 mph) approximately 5.3% of the time, while winds were less than 4.5 m/s (10.1 mph) approximately 58.6% of the time.

**Monthly Wind Power Density at 10 m  
(Monthly Averages over 1994 to 2000)**



**Frequency Distribution of Winds  
(1994 to 2000)**



**Annual Wind Power Density at 10 m  
(1994 to 2000)**

